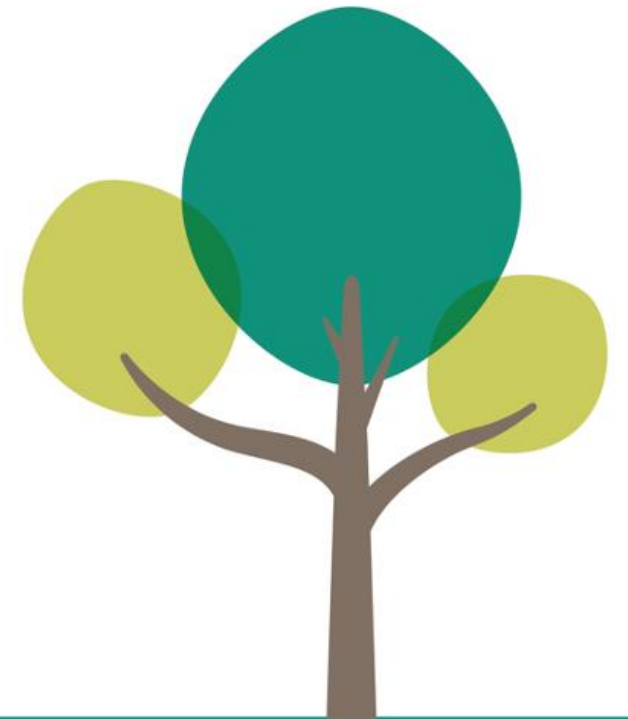


COVID Winter Grant Scheme



Objective

To provide support to vulnerable households and families (with or without children) particularly affected by the pandemic throughout the winter period where alternative sources of assistance may be unavailable



Introduction

- £170 million of funding provided by The Department of Works & Pensions (DWP)
- Grants administered by County Councils and Unitary Authorities across England
- Funding between 1 December 2020 and 31 March 2021
 - Sandwell's allocation is **£1.4 million**



Who it can be spent on?

- 80% of funding ring-fenced to vulnerable households with children
- 20% to vulnerable households without children
- Can include households not currently in receive of DWP welfare benefits
- Does not cover rent payments, other housing costs, provision of general advice or managing debt and/or financial hardship



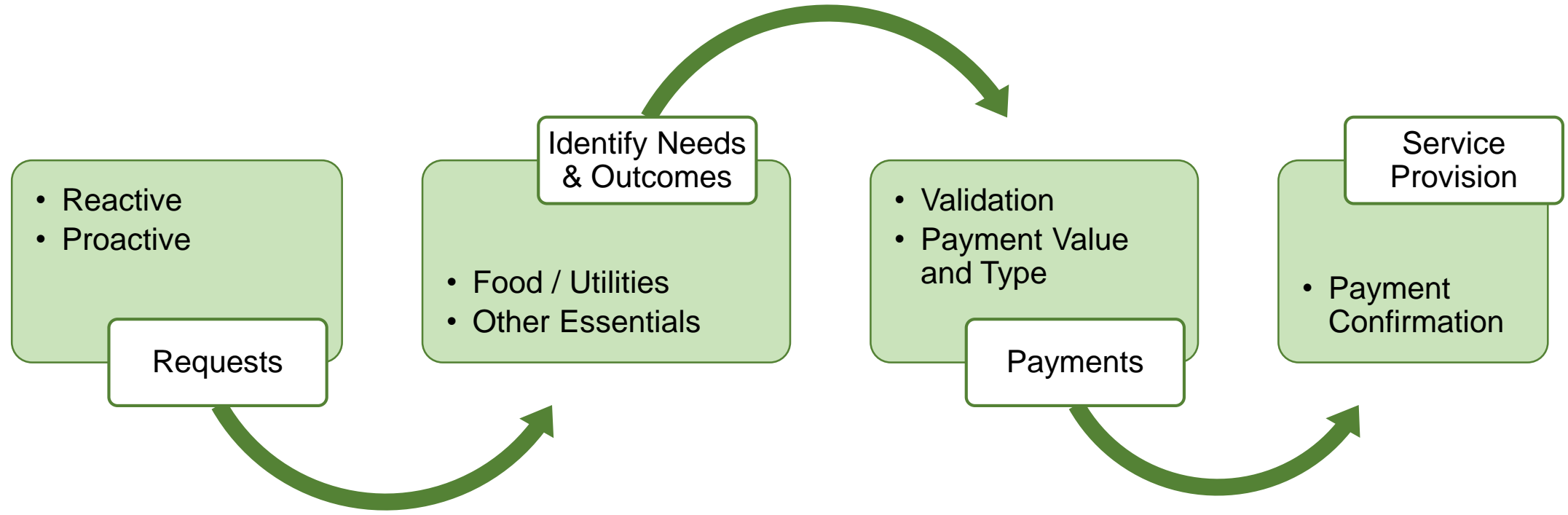
How can it be spent?

Food & Utilities - At least 80% total funding to provide support with food, energy and water bills for household purposes (inc. drinking, washing, cooking, central heating, sanitary purposes and sewerage) or other related essentials

Other Essentials - Up to 20% total funding to provide support with other essentials clearly linked to scheme conditions (inc. sanitary products, warm clothing, soap, blankets, boiler service/repair, purchase of equipment inc. fridges, freezers, ovens etc)



Pathway



Predicted Position (31st January 2021)

Receive 4,030 Applications

Approve 3,120 Applications

Awarded £546,000 funds

Average award £175.00 per household



Actual Position (31st January 2021)

Received 5,766 Applications

Approved 3,277 Applications

Awarded £521,726 funds

Average award £158.00 per household



Feedback Position (31st January 2021)

- Formal complaints: nil
- Formal appeals: nil
- Formal compliments
 - *“Mommy, can you tell that lady Thank You from me too, coz she’s made you happy! So, thank you from us to you”* Sent to EH
 - *“Thank you very much for your help and it will make a huge difference to our family budget. I am really grateful for that”*. Sent to JB
 - *“Thank you for sorting out my Covid Winter Grant application. Your help is greatly appreciated”*. Sent to PM
 - *“I would like to say a big Thank You for the help and the great work you do, once again a big Thank You from my heart, take care, stay safe”*. Sent to TH

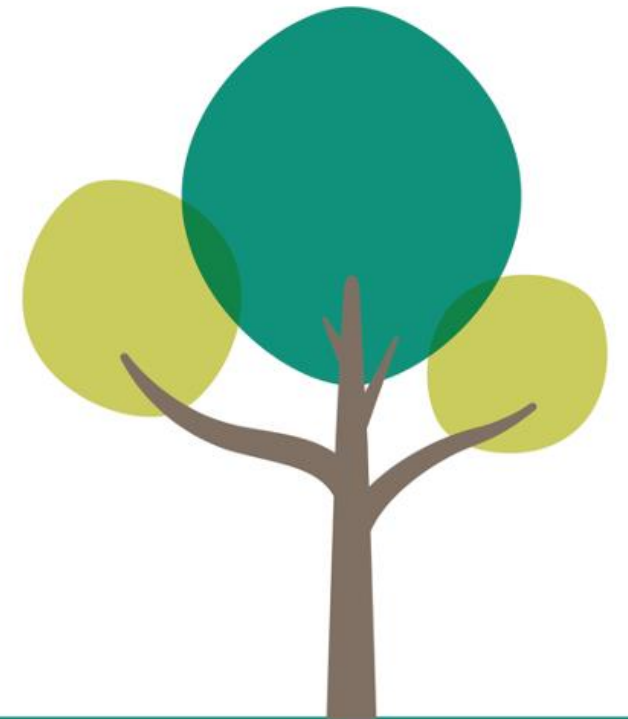
Feedback (31st January 2021)



Any Questions?



COVID Clinically Extremely Vulnerable (CEV)



Guidance

Local Authorities were provided with revised guidance on shielding and protecting people who are clinically extremely vulnerable from COVID-19 the 22nd January 2021



Sandwell Population

- Sandwell has 12,920 residents who have been identified as CEV
- 262 aged up to 17 years
- 12,658 aged over 18 years



The ask.....

- Councils should directly contact CEV individuals who present locally to register through the NSSS where possible
- Councils should be ready to contact all CEV individuals who have previously received support to access food or with basic support needs
- Councils should be ready to contact all those who have recently been added to the Shielding Patient List (SPL)



The offer.....

- Access to food
 - Priority supermarket slots
 - Voluntary organisations
 - Food parcels
- Basic support needs
 - Voluntary organisations
 - Social Care



Outcomes.....

Council returns from 22nd January to 4th February 2021

- Number of CEV's contacted by the Council: 1,118
- Number of CEV's that the Council was unable to contact: 48

- Number of CEV's supported to access food: 75
- Number of CEV's supported to supermarket slots: 61
- Number of CEV's provided with basic care needs: 16

